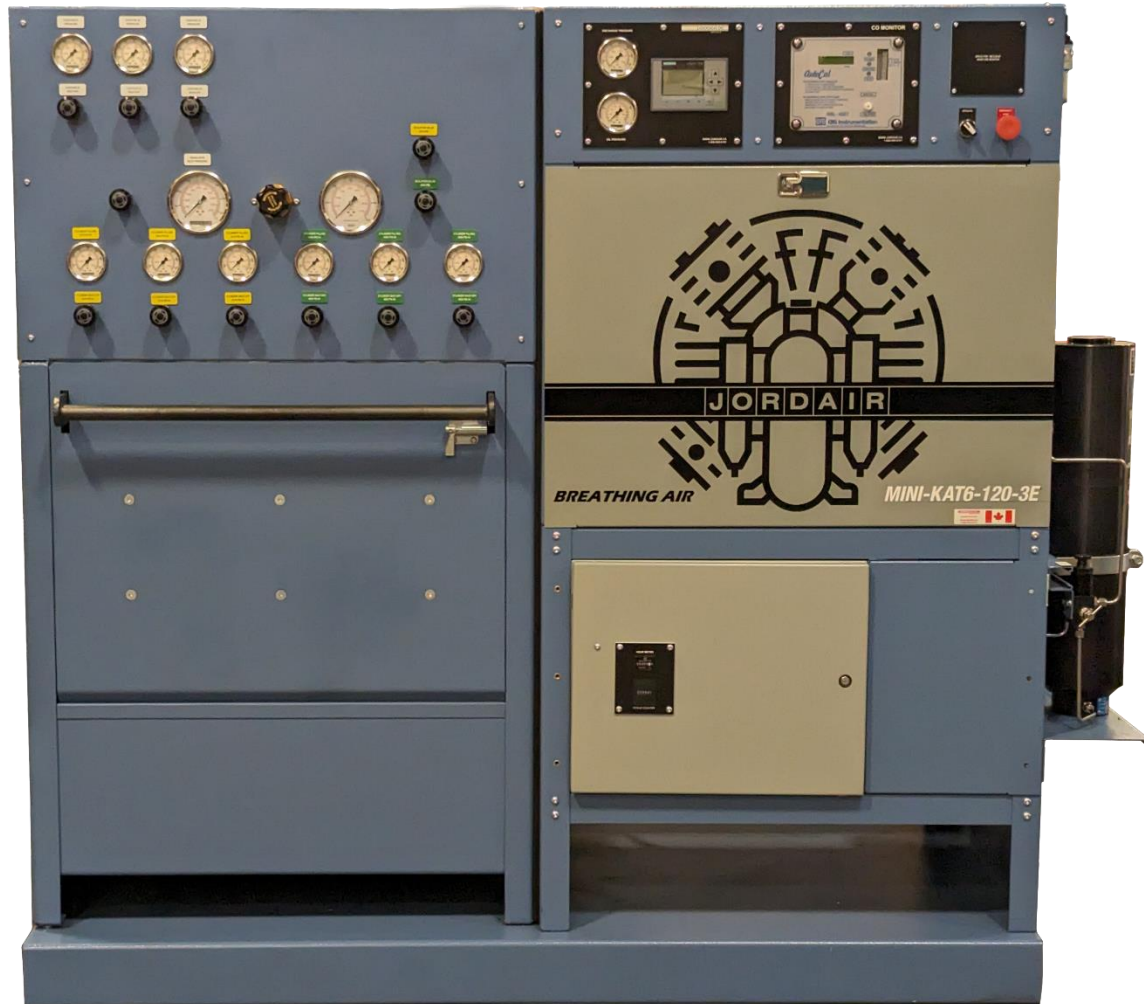


## MINI-KAT™ SERIES MODULAR COMPRESSOR SYSTEMS



### Features a 5-year System and 10-year Block Warranty

#### Jordair QC Program

- ISO 9001:2015 Cert. FM664273
- CSA Cert. No. LR77799
- CRN Pressure Components
- B&PV Licence MA-2007

#### System Features:

- Balanced Design
- Low Noise
- 35 Year Filter Chambers
- Extended Cartridge Life

#### Block Features:

- Low Oil Consumption
- Oil Filter Cartridge
- High Tech HP Piston
- Heavy Duty Crank

The compressor models shown in this brochure and their electrical controls are registered under CSA and certified accordingly. Changes to any of the electrical controls or components will void the existing CSA certification. A Special Inspection will need to be performed by CSA to certify any custom compressor package. Please consult a Jordair representative for CSA Special Inspection pricing.

Please consult a Jordair representative for a breakdown of all additional costs that may be incurred on a custom compressor.

**Jordair breathing air compressors and filter systems meet or exceed the latest CSA standard CAN/CSA-Z180.1-19**

All MINI-KAT compressor systems come standard with a DF3 series tilt-door fill station and 3 x TC air storage cylinders, all mounted on a common base

## SCOPE OF SUPPLY AND OPTIONS

- Logo 8 PLC with panel mounted 4" x 4" TDE 6 line screen showing compressor fault data
- Panel mounted CO monitor with regulator
- Low oil alarm and screen display of the fault
- High temperature alarm and screen display of the fault
- ESD emergency shut down button
- Final pressure switch set for customers required shut down pressure
- Auto-run and manual mode operation with emergency shutdown button
- Optional FLEXY connection to the customer and service technicians cell phone
- Optional Securus Moisture Control Monitor with status indicator lights
- Panel mounted pressure gauge display for final pressure and oil pressure
- Inter-stage pressure gauges are mounted on the block and visible at the back side of the compressor
- Nationally certified CRN registered 7300 PSIG filter system cartridge life matched to the compressor capacity
- Final separator cycle counter to ensure filter system safety and record pressure cycles
- Cycle count is displayed on the panel mounted display screen
- Automatic condensate drain and silent collection system
- Adjustable regulator allows the customer to change SCBA fill pressure up to the final pressure of the system
- Fill station relief valve is set to protect the designated fill pressure
- Toggle valve closes the air flow to the SCBA fill points while the fill station door is open

## 4500 PSIG MINI-KAT SERIES MODULAR COMPRESSOR SYSTEMS

MODEL	FLOW RATE	MOTOR	FILTRATION SYSTEM & CAPACITY*	WEIGHT	SIZE (IN) H x D x W	
MINI-KAT4.5-100-1E	7.5 SCFM	5.0 HP	JBP41-7300-6	47,600 FT <sup>3</sup>	1650 LBS	66.5" x 34" x 76.5"
MINI-KAT4.5-100-3E	7.5 SCFM	5.0 HP	JBP41-7300-6	47,600 FT <sup>3</sup>	1650 LBS	66.5" x 34" x 76.5"
MINI-KAT4.5-120-1E	12.7 SCFM	7.5 HP	JBP41-7300-6	47,600 FT <sup>3</sup>	1760 LBS	66.5" x 34" x 76.5"
MINI-KAT4.5-120-3E	12.7 SCFM	7.5 HP	JBP41-7300-6	47,600 FT <sup>3</sup>	1760 LBS	66.5" x 34" x 76.5"

All 4500 PSIG systems are supplied with the new Jordair 7300 PSIG filter system and protected with a 4800 PSIG relief valve.

## 6100 PSIG MINI-KAT SERIES MODULAR COMPRESSOR SYSTEMS

MODEL	FLOW RATE	MOTOR	FILTRATION SYSTEM & CAPACITY*	WEIGHT	SIZE (IN) H x D x W	
MINI-KAT6-100-1E	6.7 SCFM	5.0 HP	JBP41-7300-6	47,600 FT <sup>3</sup>	1650 LBS	66.5" x 34" x 76.5"
MINI-KAT6-100-3E	6.7 SCFM	5.0 HP	JBP41-7300-6	47,600 FT <sup>3</sup>	1650 LBS	66.5" x 34" x 76.5"
MINI-KAT6-120-1E	11.9 SCFM	7.5 HP	JBP41-7300-6	47,600 FT <sup>3</sup>	1760 LBS	66.5" x 34" x 76.5"
MINI-KAT6-120-3E	11.9 SCFM	7.5 HP	JBP41-7300-6	47,600 FT <sup>3</sup>	1760 LBS	66.5" x 34" x 76.5"
MINI-KAT6-12-1E	12.6 SCFM	7.5 HP	JBP41-7300-6	47,600 FT <sup>3</sup>	1875 LBS	66.5" x 34" x 76.5"
MINI-KAT6-12-3E	12.6 SCFM	7.5 HP	JBP41-7300-6	47,600 FT <sup>3</sup>	1875 LBS	66.5" x 34" x 76.5"
MINI-KAT6-1214-1E	16.3 SCFM	10.0 HP	JBP41-7300-6	47,600 FT <sup>3</sup>	2025 LBS	66.5" x 34" x 76.5"
MINI-KAT6-1214-3E	16.3 SCFM	10.0 HP	JBP41-7300-6	47,600 FT <sup>3</sup>	2025 LBS	66.5" x 34" x 76.5"

All 6100 PSIG systems are supplied with the new Jordair 7300 PSIG filter system and protected with a 6500 PSIG relief valve.

\* Filter Capacity is based on 20°C; for a 10°C increase in temperature decrease capacity by 50%

## STANDARD FILL STATION AND STORAGE

<b>J-FFS-DF3</b>	Fill Station, 3 bottles, with cascade valves
<b>J-CYL-TC-4500-3</b>	Air Storage, 3 TC cylinders, 4500 PSIG (On all 4500 PSIG models)
<b>J-CYL-TC-6000-3</b>	Air Storage, 3 TC cylinders, 6000 PSIG (On all 6100 PSIG models)

## COMPRESSOR & FILL STATION UPGRADE OPTIONS

### COMPRESSOR FRAME COLOUR:

<b>J-PCU</b>	Change compressor frame powder coating colour
--------------	---

### CO & MOISTURE MONITORS:

<b>J-CALKIT-4021</b>	CO Monitor Calibration Kit
<b>N15096-C</b>	Securus Moisture Monitor Kit and Cap ( <i>Note: only for JBP61 and larger systems</i> )
<b>N15096-CU</b>	Securus with upgrade from the JBP41 to the JBP61 filter system
<b>EWON-FLEXY</b>	Fault data transmitter to report to Jordair, the customer, and the service provider

### COMPRESSOR FILTRATION SYSTEM:

<b>JBF-7300-6-32-U</b>	Upgrade from 1 x JBF-7300-6-22 Filter to 1 x JBF-7300-6-32
<b>JBF-7300-6-32-A</b>	Add 1 x JBF-7300-6-32 filter chamber

### CONVERT TO ULTRA SILENT PACKAGE:

<b>J-MK-USU</b>	Upgrade to ULTRA SILENT model - Includes insulated frame and auxiliary cooling fan
-----------------	--

### FILL PRESSURES AND FILL HOSES:

<b>J-FSFP-1-2</b>	1 Additional Fill Hose at 2216 PSIG SCBA - For D & DF Fill Stations
<b>J-FSFP-1-3</b>	1 Additional Fill Hose at 3000 PSIG SCUBA - For D & DF Fill Stations
<b>J-FSFP-1-4</b>	1 Additional Fill Hose at 4500 PSIG SCBA - For D & DF Fill Stations
<b>J-FSFP-2-2</b>	2 Additional Fill Hoses at 2216 PSIG SCBA - For D & DF Fill Stations
<b>J-FSFP-2-3</b>	2 Additional Fill Hoses at 3000 PSIG SCUBA - For D & DF Fill Stations
<b>J-FSFP-2-4</b>	2 Additional Fill Hoses at 4500 PSIG SCBA - For D & DF Fill Stations
<b>J-FSFP-3-2</b>	3 Additional Fill Hoses at 2216 PSIG SCBA - For D & DF Fill Stations
<b>J-FSFP-3-3</b>	3 Additional Fill Hoses at 3000 PSIG SCUBA - For D & DF Fill Stations
<b>J-FSFP-3-4</b>	3 Additional Fill Hoses at 4500 PSIG SCBA - For D & DF Fill Stations
<b>J-FSFP-4-2</b>	4 Additional Fill Hoses at 2216 PSIG SCBA - For D & DF Fill Stations
<b>J-FSFP-4-3</b>	4 Additional Fill Hoses at 3000 PSIG SCUBA - For D & DF Fill Stations
<b>J-FSFP-4-4</b>	4 Additional Fill Hoses at 4500 PSIG SCBA - For D & DF Fill Stations
<b>J-FSEFP-R</b>	Remote Fill Point with valve and gauge
<b>J-FSEFP-S</b>	Storage Bank Isolation with valve and gauge
<b>J-FSASP-5</b>	Air Sample Connection on Fill Station
<b>J-FSFP-IV-K</b>	Isolation Valve Kit for adding an additional fill pressure to fill station

**LOCKED REGULAOTRS:**

<b>J-FFS-LP-140</b>	Locked regulator set at 140 PSIG
<b>J-FFS-HP-2216</b>	Locked regulator set at 2216 PSIG
<b>J-FFS-HP-3000</b>	Locked regulator set at 3000 PSIG
<b>J-FFS-HP-4500</b>	Locked regulator set at 4500 PSIG

**FILL STATION & STORAGE SYSTEM:**

<b>J-FFS-DF4U</b>	Upgrade from J-FFS-DF3 to J-FFS-DF4 Fill Station
<b>J-CYL-TC-4500-1A</b>	Add 1 x 4500 PSIG TC Cylinder & Manifold
<b>J-CYL-TC-6000-1A</b>	Add 1 x 6000 PSIG TC Cylinder & Manifold
<b>J-FFS-D-FT-10</b>	Fill Tube, D Series - 10", for SCUBA cylinders
<b>J-FFS-FTC-10</b>	Fill Tube Collar, D & DF Series - 10", for SCUBA cylinders
<b>J-FFS-FTL-10</b>	Fill Tube Liner, D & DF Series - 10", for SCUBA cylinders
<b>J-CYL-ASME-7000-3A</b>	Change to 3 x ASME 7000 PSIG Cylinders & Manifold
<b>J-CYL-ASME-7000-1A</b>	Add 1 x 7000 PSIG ASME Cylinder & Manifold
<b>J-6000-CSP-3</b>	Auto Cascade / Sequencing Panel - 3 Bank
<b>J-6000-CSP-4</b>	Auto Cascade / Sequencing Panel - 4 Bank

## ELECTRONIC MONITORS



### Optional Securus Cartridge Moisture Monitor

The optional Securus filter cartridge and monitor ensures optimal filter cartridge life and the highest degree of safety. The overall cartridge life for removal of water, oil and other contaminants is primarily based on temperature at 20°C. A rise in ambient and filter air temperature will reduce cartridge life. The Securus filter cartridge monitor removes the guess work and ensures consistent air quality to the current CSA Z180.1-13 breathing air standard. The monitor's green light verifies the correct cartridge is installed and the CSA air standard is being met. The yellow light advises the cartridge is due for change and the red light confirms it is depleted and shuts down the compressor.



### CO Monitor

CSA standard Z180.1-13 requires breathing air compressors to have a CO monitoring system. All MINI-KAT series compressors are supplied with a CO monitor as a standard feature.

The monitor is self-calibrating when attached to the calibration test kit. The CO monitor ensures the breathing air is within the CSA limits and will shut down the compressor if the CO exceeds 600 PPM. Panel mounted CO monitors are available for existing compressors systems. Please add the calibration kit to the order when ordering a new compressor system.



### Optional eWON Flexy Fault Data Transmitter

The FLEXY data transmitter model provides direct access to the compressor and advises when a fault occurs. The transmitter will interface to a smart phone or to a computer system. In the event of a compressor fault and shutdown the data will be transmitted to Jordair, the customer, and the service group for the system. This assists the compressor operator to have immediate knowledge in the event a fault occurs and the shortest response time to resolve the issue.

## TECHNICAL DATA

### CAPACITY CALCULATIONS

Compressor Flow Rate, or “Charge Rate”, is based on filling a 88 cubic (ft3) SCBA cylinder from the alarm set point of 1550 PSIG to 4500 PSIG

Note: Technical specifications are subject to change without notice

### FILTRATION SYSTEM DESCRIPTION

**JBP11-7300-6** Consists of 1 x JS-7300-A-1008 Separator & 1 x JBF-7300-6-16 (58821, 16" Tower)

**JBP41-7300-6** Consists of 1 x JS-7300-A-1008 Separator & 1 x JBF-7300-6-24 (67224, 24" Tower)

**JBP61-7300-6** Consists of 1 x JS-7300-A-1008 Separator & 1 x JBF-7300-6-32 (58827, 32" Tower)

*Note: All standard filtration systems use the FC-1008-SE separator element*

### ORDERING INFORMATION

Single Phase Voltages Available: (-1E) 208V, 230V

Three Phase Voltages Available: (-3E) 208V, 230V, 460V, 575V

*When placing an order, add the voltage at the end of the model number (e.g. MINI-KAT5-100-1E-230V)*

*Standard production is 60Hz, consult the factory for 50 Hz requirements and other voltages*

Weights and Sizes are approximations and are subject to change without notice. For exact weights and dimensions please consult a Jordair representative.

## COMPRESSOR SERVICE PARTS LISTS

**Note:** The following service parts list are for the default model of compressor, models with any changes or upgrades to the filtration system will differ. Consult your compressors original Test Report in the manual to find your systems service parts.

#### IK 100, 120, 121, 12, 1214 Models

QTY	Part Name	Part Number
1	Oil Filter	N25326
1	Inlet Filter Element	N25950
1	Filter Cartridge	67224
1	*Securus Filter Cartridge	*61687
1	Separator Element	FC-1008-SE
4	Filter/Separator O-Ring	J-OR-2-334
4	Filter/Separator Backup Ring	J-OR-8-334
	Synthetic Oil 3 Litres	J-C751

\*Only for compressors with a Securus Moisture Monitor

#### IK 150, 151, 1511, 157 Models

QTY	Part Name	Part Number
1	Oil Filter	N25326
1	Inlet Filter Element	N25886
1	Filter Cartridge	58827
1	*Securus Filter Cartridge	*60037
1	Separator Element	FC-1008-SE
4	Filter/Separator O-Ring	J-OR-2-334
4	Filter/Separator Backup Ring	J-OR-8-334
	Synthetic Oil 5 Litres	J-C751

**Note:** the service kits are supplied with O-rings and backup rings for the filter and separator top and base caps. Jordair recommends changing both during service as well as inspecting the barrels from both sides for any damage or deterioration. It also provides the opportunity to ensure all threads are in good condition and lubricated.

## COMPRESSOR BLOCK TECHNICAL DATA

### 5300 PSIG BLOCKS

COMPRESSOR BLOCK	SPEED	FLOW RATE	STAGES	MOTOR		FINAL PRESSURE
				HP	KW	
IK100	1400 RPM	8.4 SCFM	3	5.0	3.6	5300 PSIG
IK120	1600 RPM	12.7 SCFM	3	7.5	5.5	5300 PSIG
IK121	1800 RPM	14.3 SCFM	3	10.0	7.3	5300 PSIG

### 6100 PSIG BLOCKS

COMPRESSOR BLOCK	SPEED	FLOW RATE	STAGES	MOTOR		FINAL PRESSURE
				HP	KW	
IK100-420	1250 RPM	6.7 SCFM	3	5.0	3.6	6100 PSIG
IK120-420	1470 RPM	11.9 SCFM	3	7.5	5.5	6100 PSIG
IK12	1150 RPM	12.6 SCFM	4	7.5	5.5	6100 PSIG
IK1214	1490 RPM	16.3 SCFM	4	10.0	7.3	6100 PSIG

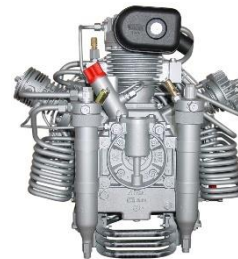
## BAUER COMPRESSOR BLOCK FEATURES

- High velocity, full flow cooling fan assembly that produces high velocity airflow over the coolers, pressure cylinders and crankcase to cool the compressed air and lubricating oil.
- Drive gear designed for an operating life of up to 30,000 hours.
- Stainless steel inter-coolers and after-coolers for high efficiency cooling and corrosion free operation.
- Cylinders are hardened through a plasma-nitrate process for up to 10,000 hours of operating life and low wear with excellent lubricating oil retention.
- Redesigned rings for the HP piston are synthetic material for low wear and a long operating life with very little oil carry over.
- Single-piece crankcase made of a high strength aluminum alloy for higher stability, larger oil capacity, and low vibration.
- Full flow oil system with a crankshaft-driven gear pump and full flow oil filter.
- Visual oil level indicator is designed show the accurate oil level.
- Reed valve on the first stage which offers higher efficiency and redesigned intake filter reduces intake valve noise.
- Final stage oil cooled cylinder and cylinder-head for lower air discharge temperature.
- Bauer compressor blocks provide the highest level of reliability and virtually no oil carryover into the compressed air stream. This ensures perfect filtration with original Bauer filter cartridges and the longest cartridge life.

IK100, IK100-420, IK120, IK120-420



IK1214



NOTE: Jordair reserves the right to change models or scope of supply at its own discretion and without notice; obtaining current factory technical product descriptions is recommended