

## K24 – RANGE

water- or aircooled, pressure tight compressors for air and gas

- › COMPACT STYLE
- › HIGH PERFORMANCE
- › intake pressure: 1-17 bar
- › final pressure: 63/350 bar
- › F.A.D: 120-350 m<sup>3</sup>/h

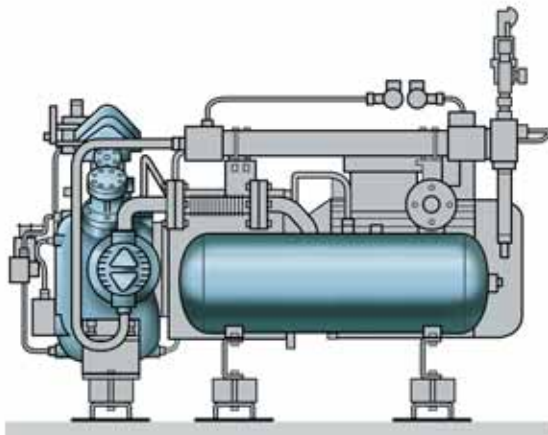
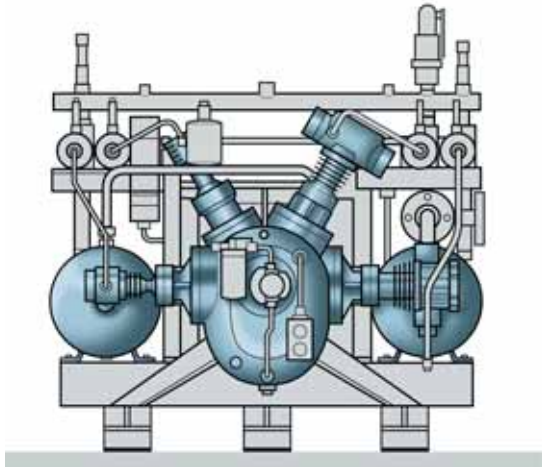


**The new K24-compressor range combines high F.A.D and a quiet run with compact dimensions.**

Our service includes planning, installation of complete turn-key systems, certifications of all kinds and, of course, a reliable after sales service as well as a guaranteed spare parts supply for decades - worldwide.

Companies, depending on a reliable gas supply trust on 60 years BAUER-experience in High Pressure Systems Technology.

## SCOPE OF SUPPLY



### Dimensions in mm:

length: 1950 width: 1450 height: 1400

## THE K24 CONCEPT

allows an unproblematic customization on different gas intake pressures and increased gas quantities for booster-versions.

- › The compact style with direct drive saves valuable assembly space.
- › The pressure-tight crankcase allows an easy blow by recirculation.
- › The water-cooled interstage- and aftercooler provide a very quiet run.
- › Easy operation, handling and maintenance were the top requirements of the performance specification.

## THE MECHANICAL ATEX-ACCEPTANCE

guarantees operating safety:

- › The encapsulated safety valves of the „ex-proof“ types are connected to a central collecting line.
- › The control unit is located in a separate ex-proof room.

## TECHNICAL DATA

Model	F.A.D. <sup>1)</sup>		Number of stages	Intake pressure (bar abs.)	Operating pressure bar	Speed r.p.m	Motor power kW	Power consumption kW	Net weight app. kg
	l/min	m <sup>3</sup> /h							
<b>K-24 Range 350 bar / 5000 psig</b>									
IK 24.0	2000-3580	120-215	4	1 - 1,7	350	1480	75	42-68	2100
BK 24.11	2000-5500	120-330	4	2 - 5,5	350	1480	75	36-68	2100
BK 24.12	2670-5700	160-340	4	5 - 11	350	1480	75	38-59	2100
BK 24.13	2500-5000	150-300	4	9 - 17	350	1480	45	30-44	2100
<b>K-24 Range 63 bar / 900 psig</b>									
B 24.4	4000	240	3	1	63	1480	75	62	2100

1) measured acc. to VDMA 4362, tolerance  $\pm 5\%$ , with gas flow meter at 0,8 factor of final pressure

### BAUER KOMPRESSOREN GmbH

P.O. Box 710260 | 81452 München

Phone +49 (0) 89 / 780 49 - 0

Fax +49 (0) 89 / 780 49 - 167

industrie@bauer-kompressoren.de

www.bauer-kompressoren.de



DIN EN ISO 9001

**K24-E**

5.07 PR 0121

subject to technical modifications