

NEW "G" SERIES 5000 PSIG 4 STAGE NITROGEN AND HELIUM COMPRESSOR SYSTEMS**Jordair QC Program**

- ISO 9001:2008 Cert. 97-544
- CSA Cert. No. LR77799
- CRN Pressure Components
- B&PV Licence MA-2007

System Features:

- Balanced Design
- Low Noise
- Thermal balance
- Plasma-nitrate cylinder process

Block Features:

- Low Oil Consumption
- Oil Filter Cartridge
- High Tech HP Piston
- Heavy Duty Crank

TECHNICAL DATA FOR 5000 PSIG FOUR STAGE UNITS

MODEL	FLOW-RATE	POWER	MOTOR	INLET PRESSURE	WEIGHT (KG)	SIZE (CM) H x D x W
G22.0-22-3E	33 SCFM	3 PHASE	30 HP	3.5 PSIG	570 KG	125 x 102 x 214
G23.0-37-3E	52 SCFM	3 PHASE	50 HP	3.5 PSIG	780 KG	115 x 122 x 230

JORDAIR – "RELIABILITY & SAFETY" – BAUER

101-7950 Huston Road, Delta, B.C., V4G 1C2

Tel: 604-940-8101 Fax: 604-940-8131

Web site www.jordair.ca

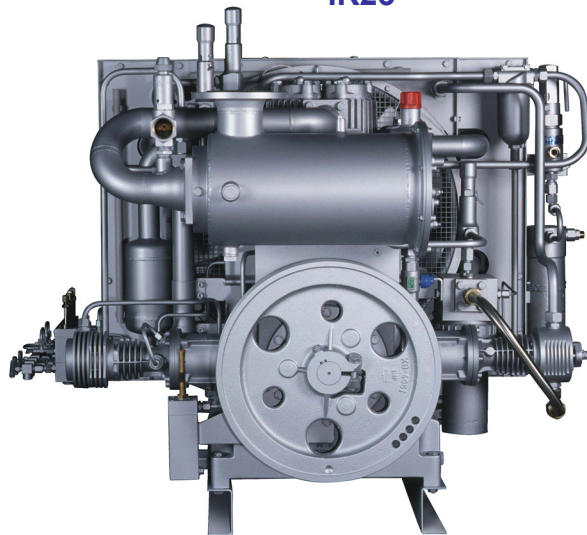
NEW "G" SERIES 5000 PSIG 4 STAGE NITROGEN AND HELIUM COMPRESSOR SYSTEMS

BLOCK MODEL	SPEED	CAPACITY F.A.D.	STAGES	MOTOR		FINAL PRESSURE
				HP	kW	
G22.0	1400 RPM	35	4	30	22.2	5000 PSIG
G23.0	1480 RPM	52	4	50	37.0	5000 PSIG

NEW BAUER BLOCK FEATURES

- New high velocity, full flow cooling fan assembly that produces high velocity airflow over the coolers, pressure cylinders and crankcase to cool the compressed air and lubricating oil.
- Drive gear designed for an operating life of 30,000 hours.
- Stainless steel inter and after-coolers for high efficiency cooling and corrosion free operation.
- Cylinders are hardened through a plasma-nitrate process for up to 10,000 hours of operating life and low wear with excellent lubricating oil retention.
- Redesigned HP piston rings are synthetic material for low wear and a long operating life.
- Single-piece crankcase made of a high strength aluminum alloy for higher stability, larger oil capacity and low vibration.
- Full flow oil system with a crankshaft-driven gear pump and full flow oil filter.
- Visual oil level indicator is designed to prevent over-filling of the crankcase with oil.
- New reed valve on first stage which offers higher efficiency and redesigned intake filter reduces intake valve noise.
- New final stage oil cooled cylinder head for lower air discharge temperature.

Consult the factory for the full range of inlet pressures and capacities available.

IK22**IK23****JORDAIR IS ISO 9001:2008 CERTIFIED**

JORDAIR – "RELIABILITY & SAFETY" – BAUER
 101-7950 Huston Road, Delta, B.C., V4G 1C2 Tel: 604-940-8101 Fax: 604-940-8131
 Web site www.jordair.ca