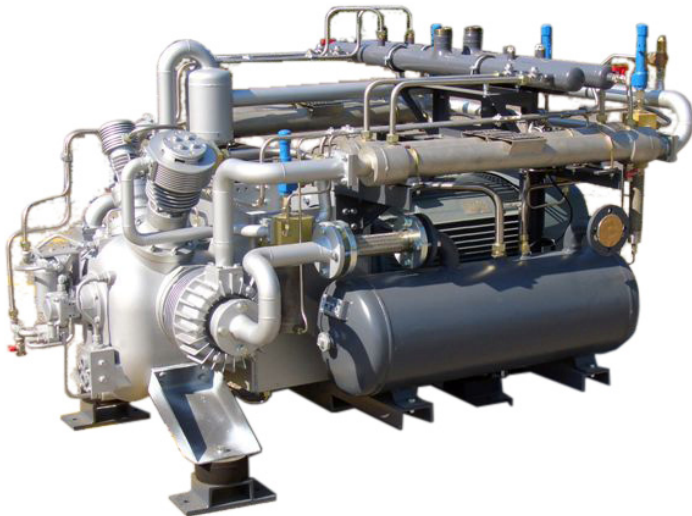


**BK24****Jordair QC Program**

- ISO 9001:2008 Cert. 97-544
- CSA Cert. No. LR77799
- CRN Pressure Components
- B&PV Licence MA-2007

**System Features:**

- Balanced Design
- Low Noise

**Block Features:**

- Low Oil Consumption
- Oil Filter Cartridge
- High Tech HP Piston
- Heavy Duty Crank

**TECHNICAL DATA FOR 5000 PSIG UNITS**

- Direct drive by a flexible coupling.
- Electric motor or engine drive
- Speed range up to 1750 RPM
- Available water or air cooled
- For compression of air, nitrogen, helium, and natural gas

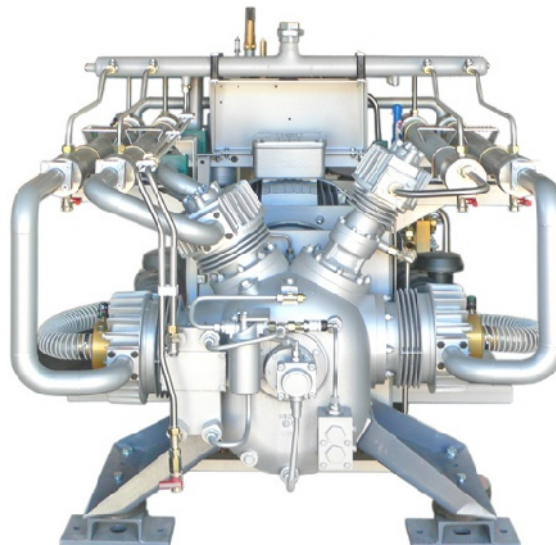
## BK24

BLOCK MODEL	SPEED	F.A.D.		STAGES	Intake Pressure		FINAL PRESSURE	DRIVE
		M3/H	CFM		BAR	PSI		
<b>IK 24.0</b>	1750 RPM	112 - 191	66 - 111	4	1 - 1,7	14,5 - 25	5000 PSIG	68
<b>BK 24.11</b>	1750 RPM	105 - 290	62 - 171	4	2 - 5,5	29 - 80	5000 PSIG	68
<b>BK 24.12</b>	1750 RPM	142 - 312	84 - 184	4	5 - 11	72 - 160	5000 PSIG	68
<b>BK 24.13</b>	1750 RPM	140 - 264	81 - 154	4	9 - 17	130 - 250	5000 PSIG	50

### NEW BAUER BLOCK FEATURES

- New high velocity, full flow cooling fan assembly that produces high velocity airflow over the coolers, pressure cylinders and crankcase to cool the compressed air and lubricating oil.
- Drive gear designed for an operating life of 30,000 hours.
- Stainless steel inter and after-coolers for high efficiency cooling and corrosion free operation.
- Cylinders are hardened through a plasma-nitrate process for up to 10,000 hours of operating life and low wear with excellent lubricating oil retention.
- Redesigned rings for the HP piston are synthetic material for low wear and a long operating life.
- Single-piece crankcase made of a high strength aluminum alloy for higher stability, larger oil capacity and low vibration.
- Full flow oil system with a crankshaft-driven gear pump and follow flow oil filter.
- Visual oil level indicator is designed to prevent over-filling of the crankcase with oil.
- New reed valve on first stage which offers higher efficiency and redesigned intake filter reduces intake valve noise.
- New final stage oil cooled cylinder head for lower air discharge temperature.

### IK24



**JORDAIR IS ISO 9001:2008 CERTIFIED**

JORDAIR – “RELIABILITY & SAFETY” – BAUER

101-7950 Huston Road, Delta, B.C., V4G 1C2

Tel: 604-940-8101 Fax: 604-940-8131

Web site [www.jordair.ca](http://www.jordair.ca)